

# **SPN-Technologies**



**SPN-Tools**

# SPN-Tools introduction

SPN-Tools is product data management tool for SolidWorks. With SPN-Tools you can easily fill out product data to models, batch print your current assembly drawings, copy your documents, import/export data from/to other systems like ERP, CRM, PDM, etc.

## Properties- data management tool includes:

Properties data management tool includes most advanced set of predefined functions to simplify your designing and data management procedures.

Configuration specific datafilling to models. Document specific properties are stored as custom properties and properties handled in configuration level as configuration specific properties.

Model- and Drawingnumber generator based on text-file, Excel-file, database or PDM.

Itemcode search from your database. Database can be textfile or fetched straight from SQL-server.

Automatically updating models based on your item code data. Properties and dimensions can be updated straight from the database. This keeps your models having always the same values as you have in your database.

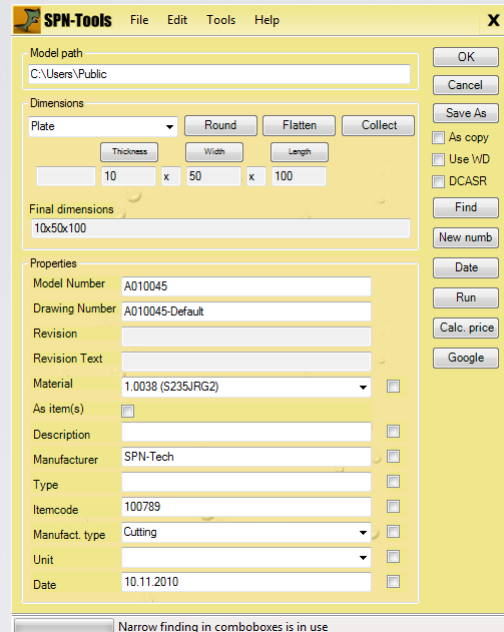
Sheet-metal helper for dimensioning flattened size of bended part. The old and familiar "unfold, sketch and fold" -technique.

Advanced working directory option. You do not need to show the folder for your model and drawing, SPN-Tools saves those to your specified location.

Really easy to use "Save as Copy"-function

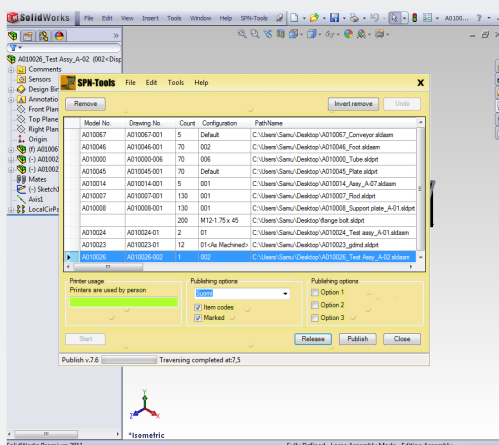
Advanced cutlist item management.

**And much much more!**



## Publisher tool includes:

Publisher tool includes all the features you need for publishing your document to production and for documentation purposes.



Whole document structure batch printing based on your active model, you can create scripts how you want to print. All the model properties are loaded for use so you can really generate almost anything with the script!

3D-PDF, Edrawings-, DXF-, DWG-, PDF-format publishing. Printing to different printers with normal and fitting options. Customizable printing order and filtering.

Model count adding to drawings during printing. Adds the total count to your drawing.

Drawing updater which updates your drawing views to correct configuration. Can be customized with SPN-Tools scripting.

Drawing updater which checks your BOM to make sure it is connected to currently used configuration.

**SPN-Technologies Tmi**  
**Phone: +358445250354**  
**E-mail: samu.niveri@spn-technologies.fi**

## Export tool includes:

Fully scriptable exporting, you can for example get BOM, spare part-list, ERP-Export, and almost anything by pushing one button. Export tool creates spreadsheets, text files, and maybe first in the world Bill of Material with images!

Document structure based collection of intended and structural BOMs. All the properties are collected and you can configure almost unlimited ways to export your structural properties.

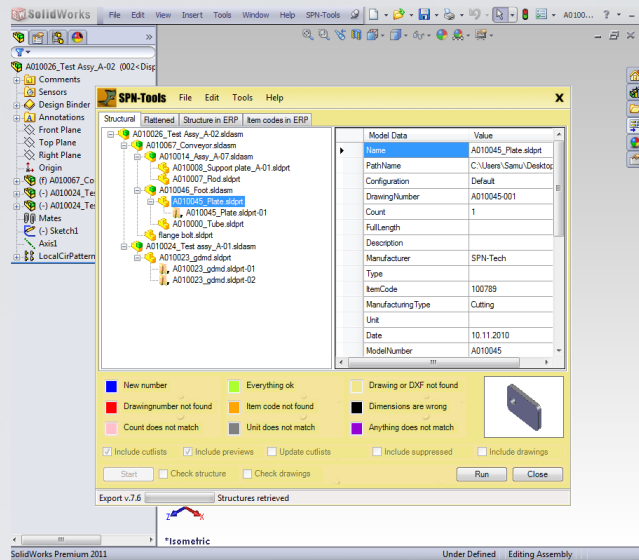
Cut-list items can be included to exports. You can even get the cutlist items only from your assembly tree.

Drawings can be included to exports. In case you want to do for example drawing catalogue with images to spreadsheet fast, you can use SPN-Tools Export to manage this kind of tasks.

Preview images can be included to exports. Have been looking for really informative BOMs with images? Do not look any more as SPN-Tools provides this functionality by default!

Possibility to use structural checker which can check your document structure and attributes to make sure it matches for example ERP data.

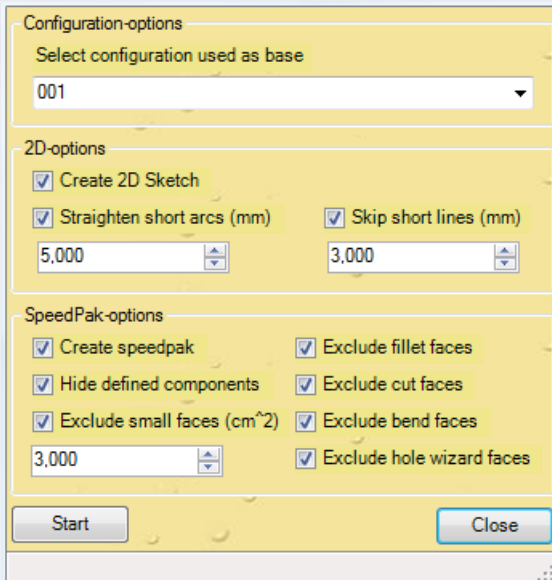
Possibility to update cut-list items at collection time to make sure your cut-list items are up-to-date when exporting.



You can create almost any kind of spreadsheet with SPN-Tools Export

## Layout tool includes:

Layout tool creates 2D-sketch and SpeedPak with comprehensive set of geometry filtering options.



2D-converting straight to model. You get the top view converted your selected plane for use it in really large drawings which would not open in other ways.

Options to skip short lines and arcs with small diameters when doing simplified 2D-sketch. You do not need to show every single line in big layouts.

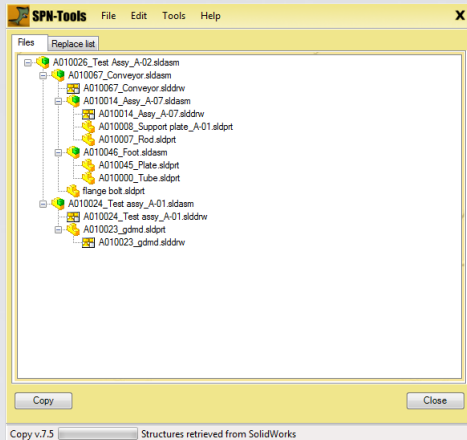
Speedpak-creation with options. You can filter out faces and not needed components like bolts, washers, nuts etc.

Feature sense for faces to skip. You can define faces to skip with size and feature recognition.

With the Layout tool you will be sure to get the huge drawings and models finished!

## Copy tool includes:

Copy tool is intended to structural copying. Copy tool can be also set up a replacement list for replacing documents during the copying.



Whole document structure copying to other folder. Fast and easy to use copying method.

You can skip copying library components. Your defined library components will be always linked from your library.

Replacement lists from SQL-Database or PDM. You can replace models with different names based on your replacement list. Needed sometimes when you want to get rid of some models which have some problems and new versions are already made.

## SPN-Tools customization:

SPN-Tools has powerful scripting engine. You can modify the software to suit your needs in many ways. Mostly people are looking for highly customized BOMs with preview images and managed publishing for different kinds of documents.

## SPN-Tools timesaving:

SPN-Tools has been helping people away from the unneeded tasks for years. Mostly your time goes to small details that has to be correct and checked many times to be sure everything works out. SPN-Tools provides package that has been well structured for automating the unwanted routine tasks.

